

RAINSHADOW EXPEDITIONS, LLC

PRESENTS



AN EXPEDITION TO **ANTARCTICA**

ON BOARD THE M/V PLACIUS
FEBRUARY 26 - MARCH 11, 2019

Join us on a journey to the great southern continent. Antarctica is a place like no other. Unique animals and otherworldly landscapes await the visitor to this harsh but beautiful location. On board our comfortable expeditionary vessel, the MV Plancius, we will explore this vast region, and venture south towards the polar circle. At this point in the season, ice pack should be at its lowest, allowing us the best chance to venture this far south. Along the way we will encounter numerous penguin species, skuas, gulls, whales (including humpbacks and orcas), seals, and many other animals. The expeditionary style of this trip means that we will spend the maximum time possible on shore at each of the locations we visit. Our guides are experts on Antarctica and will ensure that we have an unforgettable experience!





ITINERARY

February 26-27: Departure from the US. After leaving home in the afternoon, we will fly overnight to Buenos Aires, arriving mid-morning. Following lunch at a local restaurant we will transfer to the domestic airport for our connecting flight to Ushuaia. Upon arrival in the late afternoon, we will check into our rooms at Los Cauquenes Resort and Spa, followed by dinner at the on-site gourmet restaurant, Reinamora.

February 28: This morning will be at leisure to rest from our long flights or explore the southern-most city in the world. There are many interesting museums and shops to visit, and a charming waterfront area to explore. After lunch on your own at one of the many restaurants in town, we will reconvene at the hotel to collect our luggage and transfer to the port to board our waiting ship.

Itinerary on board the M/V Plancius

February 28: End of the World, Start of a Journey

Your voyage begins where the world drops off: Ushuaia, Argentina, reputed to be the southernmost city on the planet, located on the far southern tip of South America. Starting in the afternoon, you embark from this small resort town on Tierra del Fuego – nicknamed “The End of the World” – and sail the scenic, mountain-fringed Beagle Channel for the rest of the evening.

March 1-2: Path of the Polar Explorers

Over the next two days on the Drake Passage, you catch a taste of life from the perspective of the polar explorers who first braved these regions: cool salt breezes, rolling waves, maybe even a fin whale blasting up a column of sea spray. After passing the Antarctic Convergence – Antarctica’s natural boundary, formed when north-flowing cold waters collide with warmer subantarctic seas – you are in the circum-Antarctic upwelling zone. Not only does the marine life change, the avian life changes too: A variety of albatrosses and petrels show up, along with Cape pigeons and southern fulmars. Then, near the South Shetlands Islands, the first icebergs flash into sight.

March 3-8: Enter the Antarctic

Options for Antarctic Peninsula activities are many, and no less great during the late summer. Humpback whales are prolific in this region, gorging themselves on krill before their migration north. The penguin chicks are also fledging, stirring up activity on the beaches while sleek leopard seals lie in wait, poised to attack the less fortunate ones. Sites for your adventures may include: Livingston Island – Here you find a wide variety of gentoo and chinstrap penguins on Hannah Point, in addition to southern giant petrels and elephant seals hauling out onto the beach. Deception Island – Actually a subducted crater, this island opens into the sea and creates a natural harbor for the ship. Hot springs, an abandoned whaling station, and multiple bird species – cape petrels, kelp gulls, brown and south polar skuas, and Antarctic terns – can be seen here. Wilson’s storm petrels and black-bellied storm petrels also nest in the ruins of the whaling station in Whalers Bay. Cuverville Island – A small precipitous island nestled between the mountains of the Antarctic Peninsula and Rongé Island, Cuverville houses a large colony of gentoo penguins and breeding pairs of brown skuas. (cont.)



Itinerary on board the M/V Plancius

March 3-8: Enter the Antarctic (cont.)

Neko Harbour – An epic landscape of mammoth glaciers and endless wind-carved snow. Opportunities for Zodiac cruising and kayaking provide you the closest possible view of the ice-crusting alpine peaks. You may also be able to set foot on the Continent here. Paradise Bay – You could take a Zodiac cruise in these sprawling, ice-flecked waters, where you have a good chance of seeing humpback and minke whales. Booth, Pléneau & Petermann Islands – If the ice allows it, you may sail through the Lemaire Channel in search of Adélie penguins and blue-eyed shags. There's a good chance you'll encounter humpback and minke whales as well as leopard seals. You may also visit Booth Island's Port Charcot. Crystal Sound – The journey takes you south along the Argentine Islands to this ice-packed body of water, and from here across the Polar Circle in the morning. Detaile Island – You may make a landing at an abandoned British research station here. Fish Islands – Further north you encounter one of the southernmost Adélie penguin and blue-eyed shag colonies in the Antarctic Peninsula. Melchior Islands – A beautiful landscape rich with icebergs. Leopard seals, crabeater seals, and whales are found here, and there are excellent opportunities for kayaking and diving. You depart at noon, depending on conditions on the Drake Passage.

March 9-10: Familiar Seas, Familiar Friends

Your return voyage is far from lonely. While crossing the Drake, you're again greeted by the vast array of seabirds remembered from the passage south. But they seem a little more familiar to you now, and you to them.

March 11: There and Back Again

Every adventure, no matter how grand, must eventually come to an end. It's now time to disembark in Ushuaia, but with memories that will accompany you wherever your next adventure lies.





AVAILABLE CABINS

TWIN WINDOW: \$10,750 PER PERSON (LIMITED AVAILABILITY)

Room includes:

- 1 window
- 2 lower berths
- Private shower & toilet
- Desk & chair
- Flatscreen TV
- Telephone and Internet connection
- Hair dryer
- Ample storage space

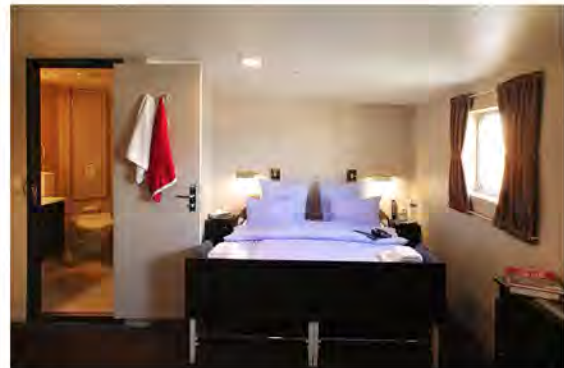


SUPERIOR: \$24,500 PER CABIN*

*Superior rooms contain one double bed and thus must be booked by the cabin rather than by the person. Thus the cost per person for two people sharing a bed in this room would be **\$12,250**.

Room includes:

- 2 windows
- 1 double bed
- 1 sofa bed
- Private shower & toilet
- Desk & chair
- Flatscreen TV
- Telephone and Internet connection
- Refrigerator
- Coffee & tea maker
- Hair dryer
- Ample storage space



OPTIONAL ACTIVITIES:

- Polar Diving - \$530 (Limited space available)
- Kayaking - \$465 (Limited space available)
- Please inquire for more information.

DEPOSIT: In order to reserve space on this expedition, a deposit of \$4,000 per person is required upon enrollment. This deposit is *conditionally refundable* based on the specifics listed under "Terms and Conditions". We highly recommend the purchase of travel cancellation insurance upon enrollment.

FINAL PAYMENT: Final payment is due no later than 90 days prior to departure.

Cost Includes: All accommodations on board the Plancius and in 4- or 5-star hotels in Ushuaia, meals, transfers, tours, entrance fees, port fees, taxes *and tips*.

RESERVATIONS: For more information please contact rainshadowexp@gmail.com.



ABOUT YOUR LEADER

Ian K. Segebarth

The founder and owner of Rainshadow Expeditions, Ian has spent the past decade traveling and guiding in over 40 countries, covering every continent. He has a background in conservation biology and environmental science, which has fueled his passion for nature and exploration. Ian is a highly experienced scuba instructor and technical cave diver, and has completed thousands of dives all over the world, including the Philippines, Indonesia, Australia, Antarctica, and the Caribbean. He is also a contributing photographer for National Geographic Magazine, and will provide photographic advice on this expedition. In addition to guiding, Ian still has ongoing research and exploration in numerous locations including remote parts of Indonesian Borneo, French Guiana, and Madagascar, and he will be happy to share his expertise on these topics.



Terms and Conditions

Cost Includes: All accommodations on board the Plancius and in 4- or 5-star hotels in Ushuaia, meals, transfers, tours, entrance fees, port fees, taxes and tips.

Cost is based on a minimum group of 9 passengers. Any alterations to group size or itinerary are subject to additional costs.

Cost does not include: International airfare from the U.S., domestic airfare to Ushuaia, any items not specifically mentioned in the itinerary, single supplements, passport or visa fees, travel insurance, alcoholic beverages, laundry, phone calls, or any other expenses of a personal nature.

Payment: An initial deposit of \$4,000 per person is required upon enrollment to hold your spot in the group. Space cannot be guaranteed until receipt of this deposit. Final payment is due no later than 90 days before departure. If booking is made within 90 days of departure, full payment will be required to confirm the reservation.

Cancellation Policy: Due to the nature of this charter, deposits are conditionally refundable. Payments will only be refundable when written cancellation is received more than 120 days prior to departure (minus a \$250 processing fee), **and** a replacement participant is found to fill the cabin in the case that the cancellation will reduce the group size to less than 9. Absolutely NO refunds will be made for services not used or meals not eaten.

Travel Insurance: We highly recommend the purchase of travel cancellation insurance that will cover you, should you have to cancel within the 120 day cancellation period. In addition, medical and evacuation insurance is *required* for this trip to Antarctica. Recommendations for insurance providers are available upon request.

Statement of Disclosure: Rainshadow Expeditions, LLC, and/or its employees, agents, or affiliates, assume no liability or responsibility for participants' travel on this trip, including the use of aircraft, watercraft, motor vehicles, or any other transportation, or any injury or difficulty sustained with hotels or food, guides, wildlife, illness, accident, theft, or other unforeseen event. Rainshadow Expeditions further assumes no responsibility for the conduct of others, whether negligent or criminal. By signing this document, the passenger confirms the physical and mental ability to complete this trip. Any additional expenses incurred due to medical conditions, physical handicaps, accidents, or any other event that results in an alteration of itinerary or plans will be borne solely by the passenger.